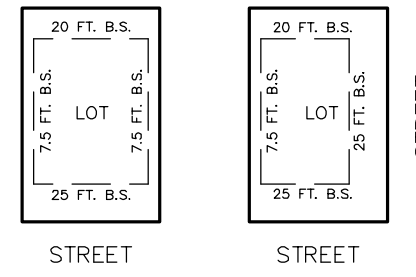
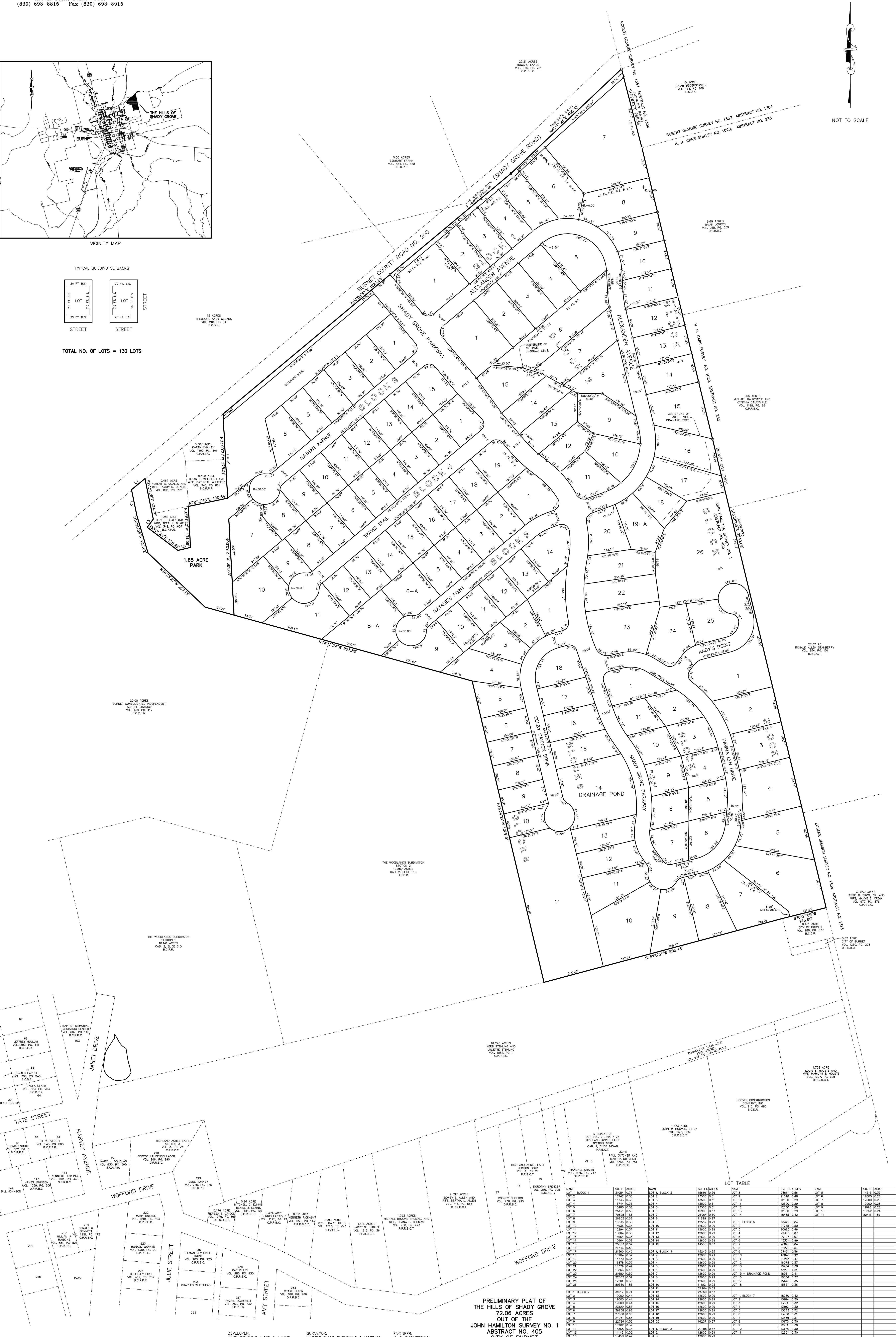


VICINITY MAP

TYPICAL BUILDING SETBACKS



TOTAL NO. OF LOTS = 130 LOTS



NOT TO SCALE

PRELIMINARY PLAT OF
 THE HILLS OF SHADY GROVE
 72.06 ACRES
 OUT OF THE
 JOHN HAMILTON SURVEY NO. 1
 ABSTRACT NO. 405
 CITY OF BURNET
 BURNET COUNTY, TEXAS

DEVELOPER: HERB STEHLING, WAYS & MEANS
 19 BEAVERS DRIVE
 GRANITE SHOALS, TEXAS 78654

SURVEYOR: MARBLE FALLS SURVEYING & MAPPING
 1500 Olive Lane
 MARBLE FALLS, TEXAS 78654

ENGINEER: K. C. ENGINEERING
 705 HWY. 291 NORTH, SUITE 203
 MARBLE FALLS, TEXAS 78654

LOT	ACRES	OWNER	LOT	ACRES	OWNER	LOT	ACRES	OWNER
1	0.07	JOHN W. HOOVER ET UX	11	0.07	JOHN W. HOOVER ET UX	21	0.07	JOHN W. HOOVER ET UX
2	0.07	JOHN W. HOOVER ET UX	12	0.07	JOHN W. HOOVER ET UX	22	0.07	JOHN W. HOOVER ET UX
3	0.07	JOHN W. HOOVER ET UX	13	0.07	JOHN W. HOOVER ET UX	23	0.07	JOHN W. HOOVER ET UX
4	0.07	JOHN W. HOOVER ET UX	14	0.07	JOHN W. HOOVER ET UX	24	0.07	JOHN W. HOOVER ET UX
5	0.07	JOHN W. HOOVER ET UX	15	0.07	JOHN W. HOOVER ET UX	25	0.07	JOHN W. HOOVER ET UX
6	0.07	JOHN W. HOOVER ET UX	16	0.07	JOHN W. HOOVER ET UX	26	0.07	JOHN W. HOOVER ET UX
7	0.07	JOHN W. HOOVER ET UX	17	0.07	JOHN W. HOOVER ET UX	27	0.07	JOHN W. HOOVER ET UX
8	0.07	JOHN W. HOOVER ET UX	18	0.07	JOHN W. HOOVER ET UX	28	0.07	JOHN W. HOOVER ET UX
9	0.07	JOHN W. HOOVER ET UX	19	0.07	JOHN W. HOOVER ET UX	29	0.07	JOHN W. HOOVER ET UX
10	0.07	JOHN W. HOOVER ET UX	20	0.07	JOHN W. HOOVER ET UX	30	0.07	JOHN W. HOOVER ET UX